

CUSTOM SHELTER SOLUTIONS

11' WIDE PEAK SHELTER SERIES

PEAK

ROUND

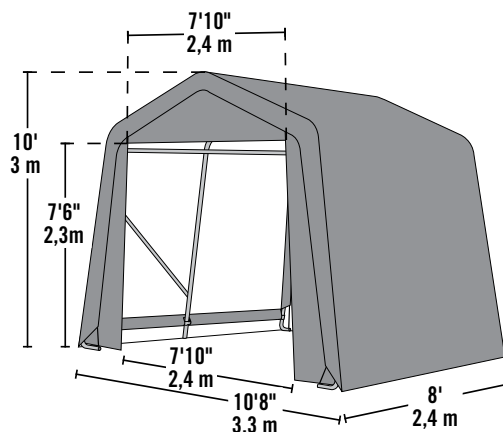
BARN

SQUARE
TUBE

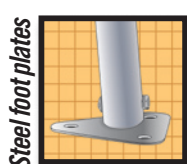
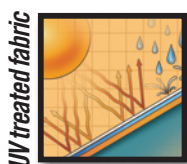
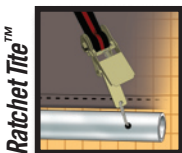
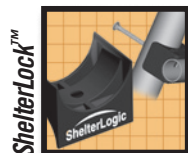
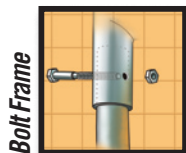
TRUSS



10 x 10 x 8 model shown



SHELTER FEATURES



All-steel DuPont™ thermoset baked on powder-coated finish resists rust and corrosion.

Our patent-pending **ShelterLock™ Stabilizer Block** at every rib connection adds *rock-solid strength and stability to frame*.

Bolt-together hardware at every connection point ensures maximum strength and durability.

Our **Ratchet Tite™ Tension System** and **Easy-Glide Sliding Cross Rails** keep the cover smooth and taught.

Advanced engineered, commercial grade **polyethylene woven fabric** is UV treated inside and out to stand up to the elements. Ultra heavy-duty PVC cover also available.

Universal steel foot plates for easy and solid connection to ground anchors, cement or pony walls.

FRAME SIZE OPTIONS AND SPECS

10ft.8in. W x 8 ft. L x 10ft. H | 3,3 m W x 2,4 m L x 2,4 m H

Custom lengths available in 4' increments to any length.

1-5/8" All steel frame

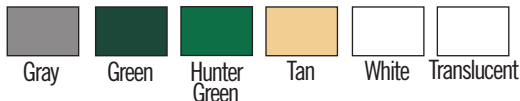
15" Auger anchors

(2) Double zippered door panels

Additional anchors sold separately

COVER OPTIONS †

- COLOR WEIGHT**
- PE standard: 9 oz. Gray, Green, Tan, White, Translucent
 - * PE heavy-duty: 14.5 oz. Gray, Green, Tan, White
 - * Ultra PVC (Polyvinyl Chloride): 21.5 oz. Hunter Green only



† All fabric weight calculations are in oz. per m².

• Polyethylene

* Fire rated FR fabric CPAI 84 Section 6 compliant.

WARRANTY INFO

	Cover	Back panel/door	Frame
Standard	1 year	1 year	1 year
Heavy Duty	10 years	3 years	3 years
PVC	10 years	3 years	3 years

Shelters of New England • 251 West Hollis St. • Nashua, NH 03060
603-886-2701 • www.sheltersofne.com

